

BILSTEIN

MOTORSPORTS SHOCK ABSORBERS

Oval Track Valving Manual **FOR "TAKE-APART" SHOCKS**



Aftermarket & Motorsports Headquarters
14102 Stowe Drive
Poway, CA 92064-7147
858/386-5900, Fax: 858/386-5901
www.bilstein.com

Eastern Aftermarket & Motorsports
293 Timber Road
Mooresville, NC 28115-7868
704/663-7563
Fax: 704/663-7585



INTRODUCTION

Bilstein is pleased to offer this **Revalving Service Procedures Manual** to teams running our serviceable Bilstein gas pressure shock absorbers for oval track racing.

This manual has been prepared to assist teams in achieving the proper Bilstein shock valvings to fit the requirements of their specific type of car and racing series. By simply following the procedures in this manual, Bilstein racing shock revalving may be performed at the track during test sessions or in pre-race practice.

This manual contains the step-by-step procedures on how to disassemble, revalve and reassemble serviceable Bilstein racing shock as well as identifying and describing the various component parts within Bilstein shocks. This manual has been designed to coincide with the Bilstein Motorsports Catalog for oval track racing which contains our recommended compression and rebound shock valvings for the various tracks and racing surfaces. After a valving has been determined, this manual shows you how to build the desired internal valve stack for these specifications.

Because Bilstein shocks are gas pressurized, it is imperative that the step-by-step instructions be followed exactly to prevent any risk of injury during pressurizing.

If you have any questions regarding the procedures outlined in this manual contact your Bilstein area field representative or call the Bilstein Motorsports Services Department at 800/537-1085.

We appreciate your good judgement in running the proven reliability and fade free performance of Bilstein shocks, and we wish you the best of luck during the season.

Bilstein Motorsports

For Complete Information Contact:

Aftermarket & Motorsports Headquarters

14102 Stowe Drive
Poway, CA 92064-7147
858/386-5900

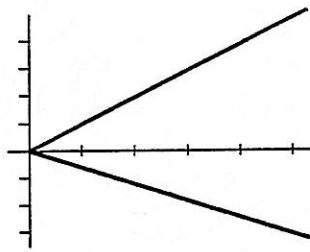
Eastern Aftermarket & Motorsports

293 Timber Road
 Mooresville, NC 28115-7868
704/663-7563



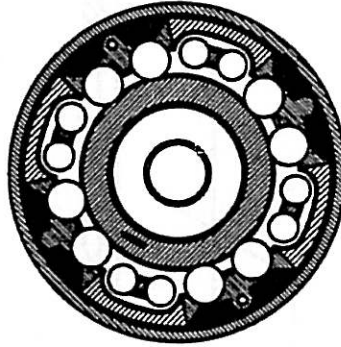
TABLE OF CONTENTS

Page 1	Introduction
Page 2	Table Of Contents
Pages 3-10	Component Descriptions
Pages 11-15	Circlip Type - Disassembly, Revalving, Assembly Procedures
Pages 16-18	Threaded Rod Guide Type - Disassembly, Revalving, Assembly Procedures
Pages 19-21	Large Nitrogen Compartment Series - Disassembly, Revalving, Assembly Procedures
Pages 22-24	Rebuildable-Revalvable Series - Disassembly, Revalving, Assembly Procedures
Pages 25-27	Econo Aluminum Series (ATAD/ATAL Type) - Disassembly, Revalving, Assembly Procedures
Pages 28-33	Short Track (Linear & Digressive) Valving Specifications
Pages 34-77	GN Revalving Specifications
Pages 78	Oil Volume For Motorsports Shocks

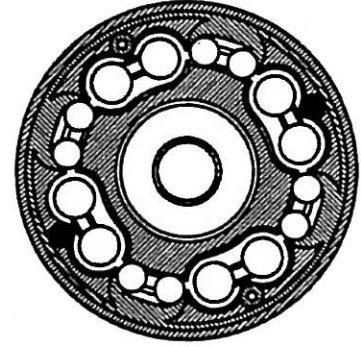


LINEAR

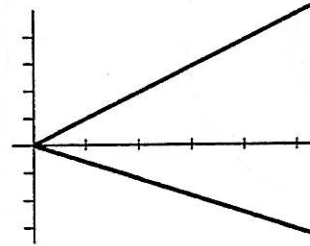
rebound side



compression side

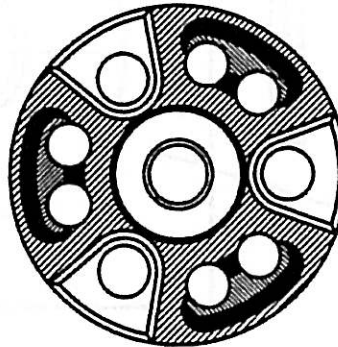


B46-U148T

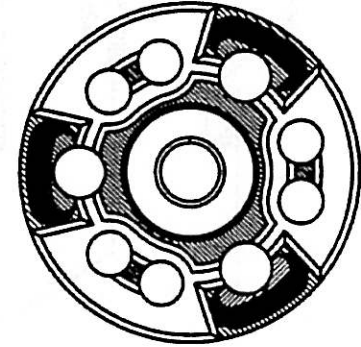


LINEAR

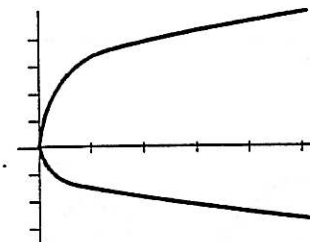
rebound side



compression side

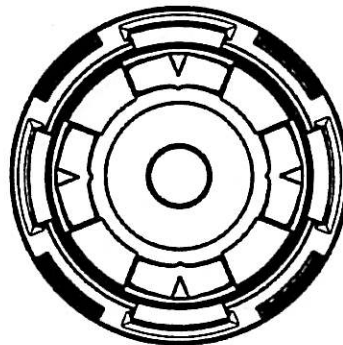


B46-U37T



DIGRESSIVE

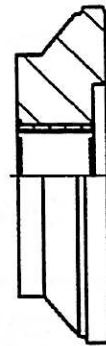
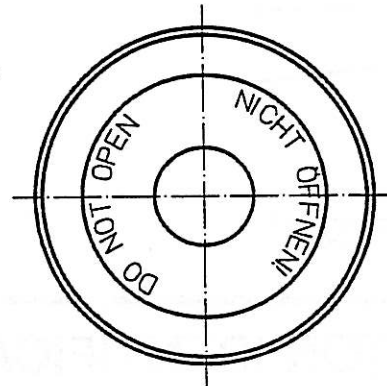
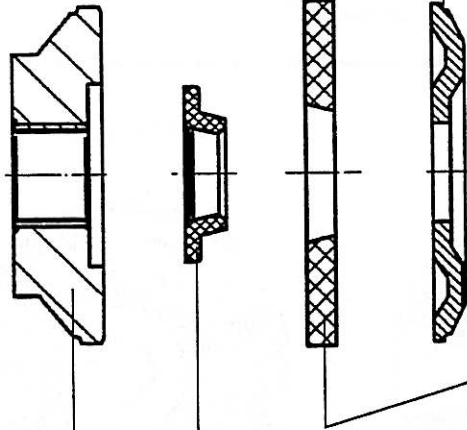
(both sides identical)



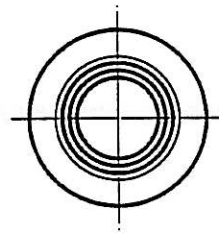
B46-699A

PISTON IDENTIFICATION & ORIENTATION

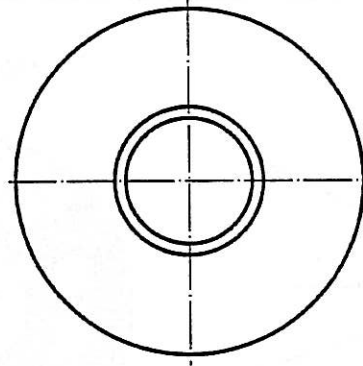
ROD GUIDE / SEAL ASSEMBLY



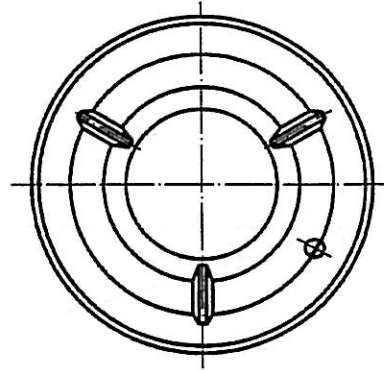
rod guide



rod seal

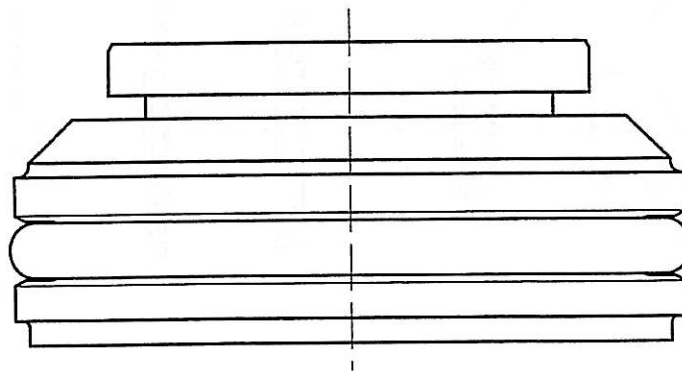
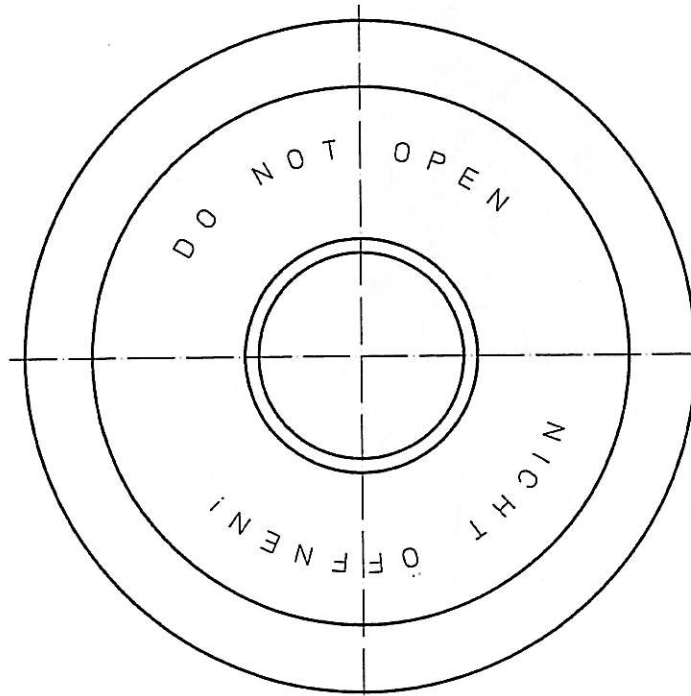


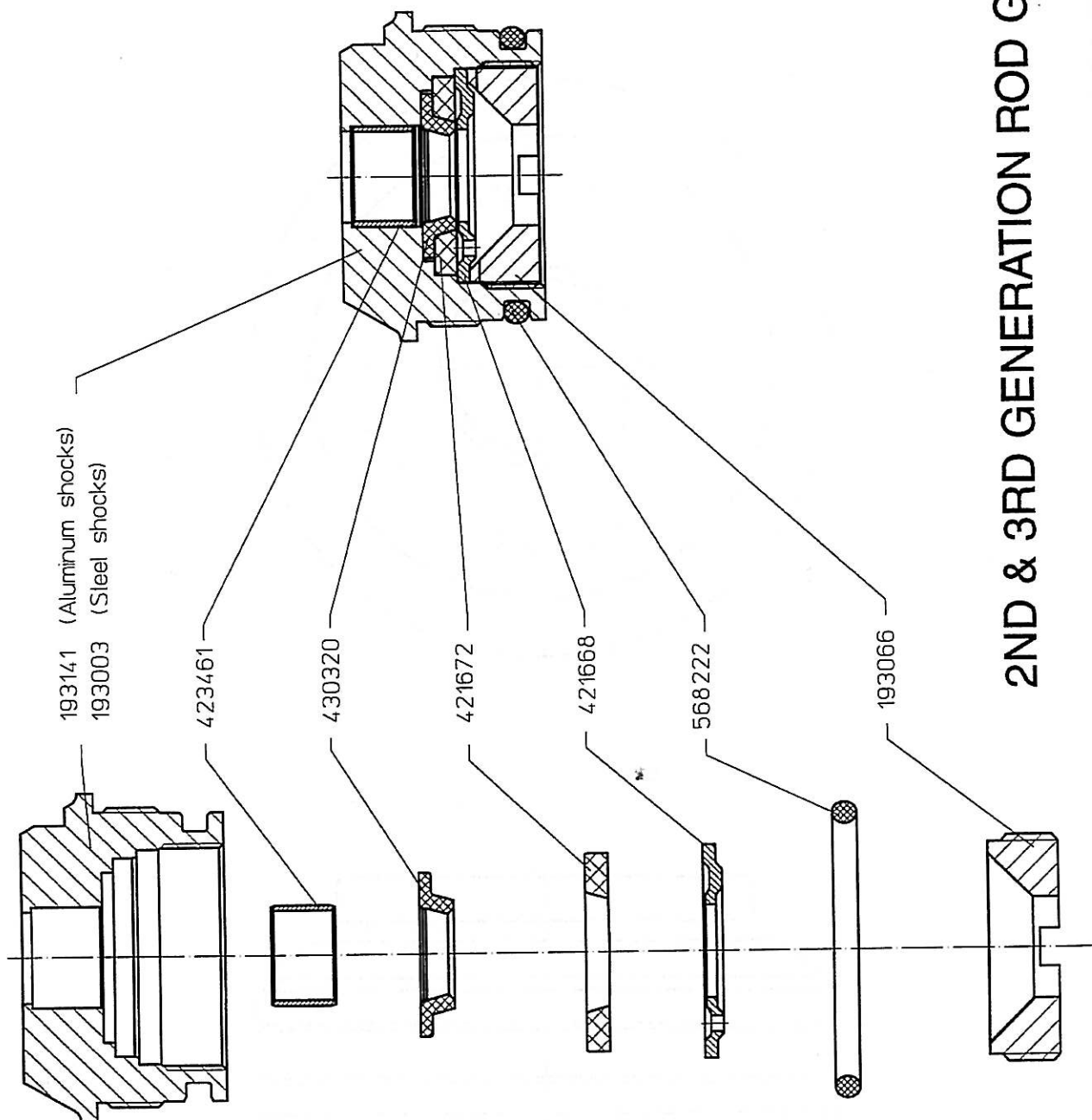
tube seal (outer seal)

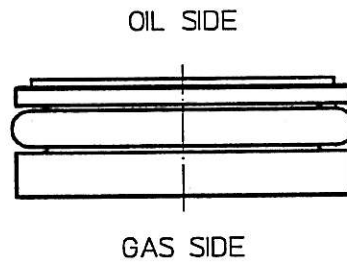
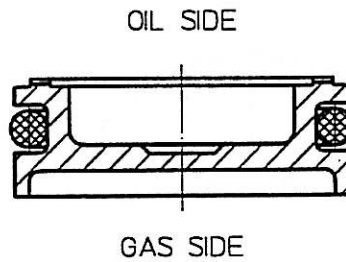


inner plate

ONE-PIECE ROD GUIDE

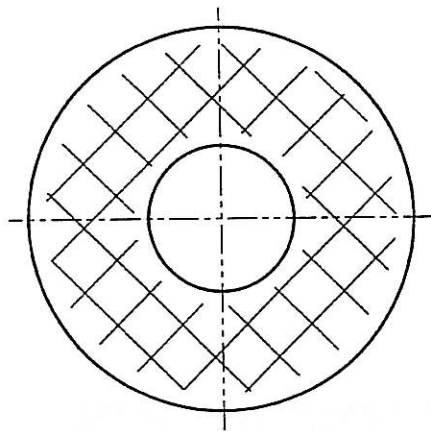




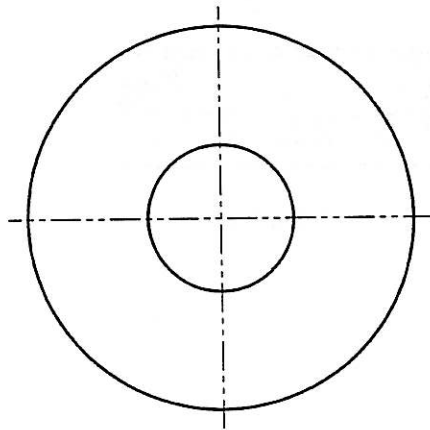


DIVIDING PISTON IDENTIFICATION & ORIENTATION

SUPPORT WASHERS 21x3F & 21x3C



"21x3F"



"21x3C"

NOTE: "21x3F" and "21x3C" can be substituted for one another as follows:

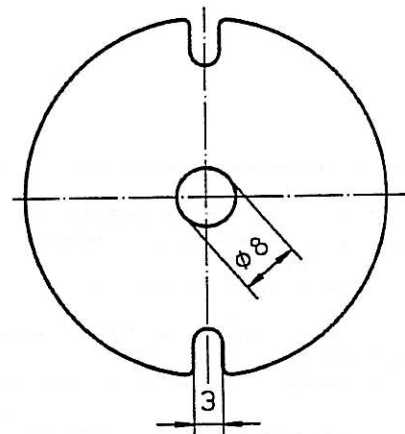
To substitute "21x3F" for "21x3C", increase next disc diameter by 0.5 mm.

To substitute "21x3C" for "21x3F", decrease next disc diameter by 0.5 mm.

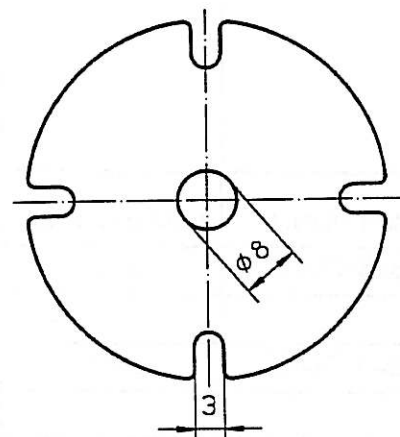
BYPASS ORIFICE PLATES

(46mm standard shocks)

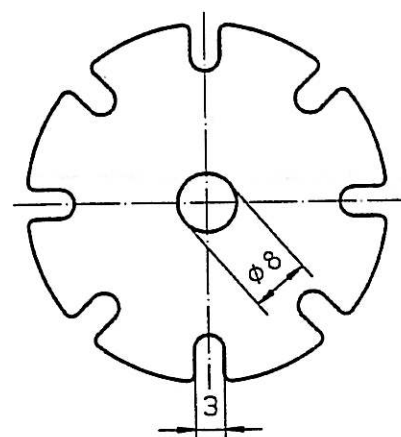
part number	thickness (mm)	bypass area (mm ²)
B46-742A1	0.15	0.9
B46-742B1	0.20	1.2
B46-742C1	0.25	1.5



part number	thickness (mm)	bypass area (mm ²)
B46-743A1	0.15	1.8
B46-743B1	0.20	2.4
B46-743C1	0.25	3.0



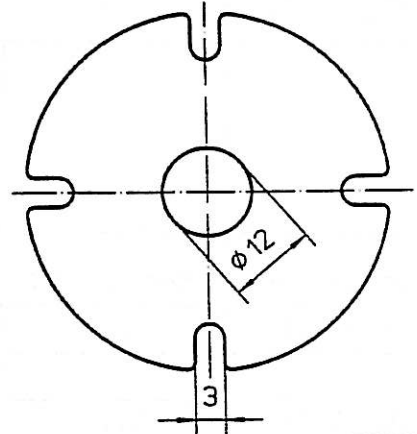
part number	thickness (mm)	bypass area (mm ²)
B46-744A1	0.15	3.6
B46-744B1	0.20	4.8
B46-744C1	0.25	6.0



BYPASS ORIFICE PLATES

(46mm adjustable shocks)

part number	thickness (mm)	bypass area (mm ²)
B46-743A2	0.15	1.8
B46-743B2	0.20	2.4
B46-742C2	0.25	3.0



part number	thickness (mm)	bypass area (mm ²)
B46-744A2	0.15	3.6
B46-744B2	0.20	4.8
B46-744C2	0.25	6.0

